



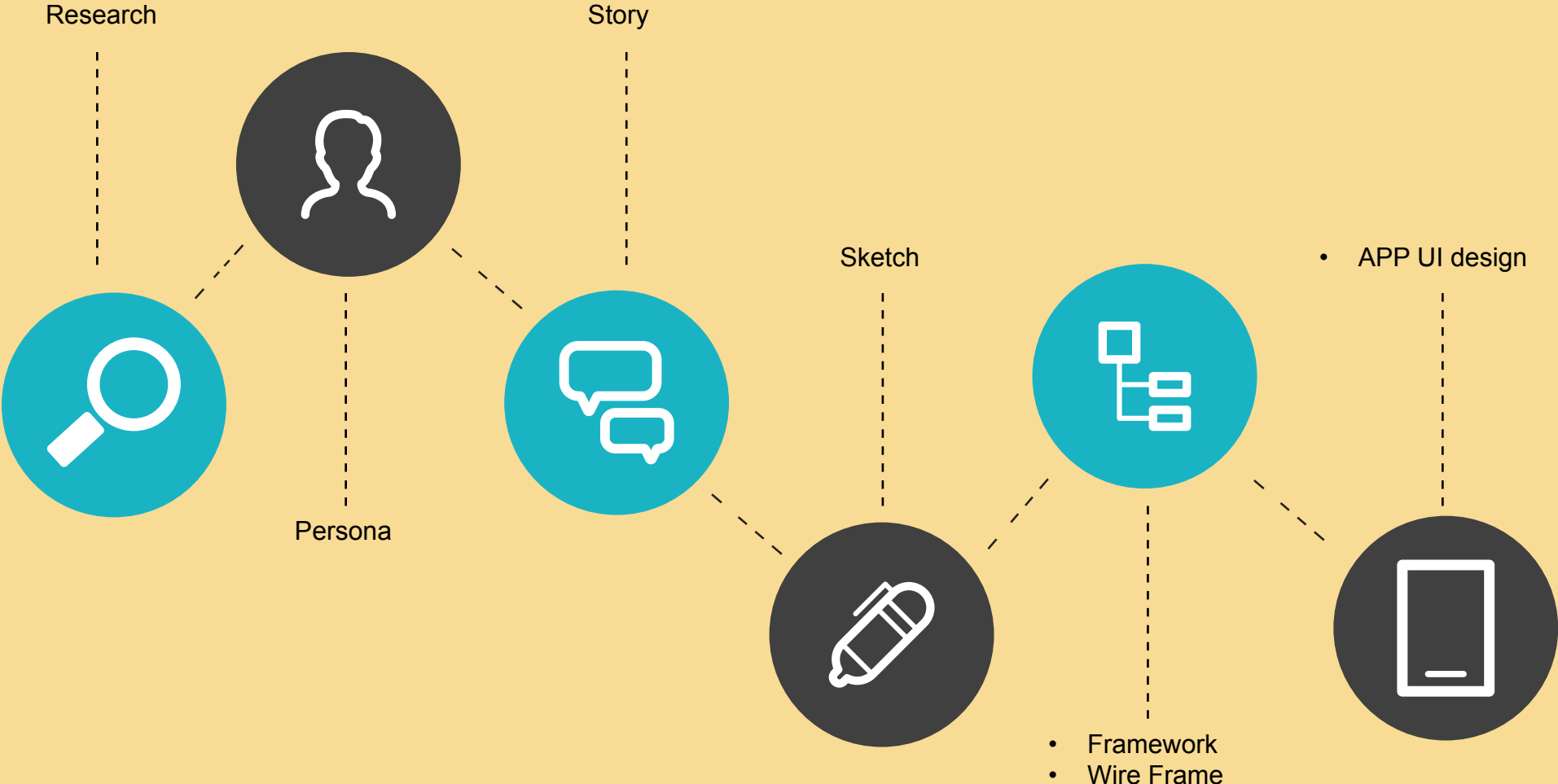
1

HCP APP Design

Dynamic Intelligent Lighting Control System APP
Android & IOS

Above All Lighting Group Project
Dong Huang, Hui Zhang, Ying Su

Design Process



Research

Why do we need human centric lighting?

Introduction

BETTER LIGHT FOR A BETTER QUALITY OF LIFE.

Light is “internal clock”. Lighting that copies daylight has more than just a visual impact; it supports bodily functions 24 hours a day. We feel good, we are productive, and we can sleep better.

BIOLOGICALLY EFFECTIVE LIGHT INDOORS

It needs to support the biological processes that define active and rest phases. Applications harnessing nonvisual effects of light use changes in illuminance and light color to recreate the dynamism of daylight indoors and are increasingly superseding static lighting solutions.

THE RIGHT LIGHTING HELPS MEET PEOPLES NEEDS

The advantages of dynamic lighting are shown by numerous studies worldwide and a growing number of practical applications.

Modern industrial society fosters an almost 24/7 lifestyle and dynamic lighting Control System can help us reconnect with our internal clock.

Goal

APP is specially designed to control create comfortable, healthy, and natural light for people. Ideal for nursing home residences, office workers, retail shoppers, patients in hospitals, children and adults in schools and any people in pursuit of a high quality healthy natural lighting environment.

Target Audiences

School students, Officer staffs, hospital patients

My Roles

UX Designer, Researcher

Tools

Photoshop, Illustrator, XD, Indesign, Sketchbook, Word, PPT

Learned

Interview, Conceptualization, Sketch, Story Board, Wireframe, interface design

Influence

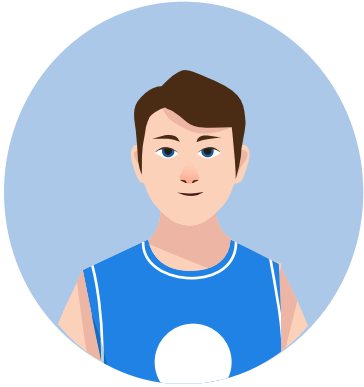
This project influence by Alan Cooper’s book “About Face: The Essentials of Interaction Design, 4th Edition”. I followed the Alan’s Interaction, and product design methods from interview with future users to drawing the persona. Then drawing frame works and wire frame to clear the APP design logic relationship and find conclusion to finish HCP User interface design.

Citation

Alan Cooper’s book “About Face: The Essentials of Interaction Design, 4th Edition”



Persona



Name: Yi Lu

Gender: Male

Age: 16

Occupation: Student

About:

Yi Lu studies at middle school to prepare for the test of high school. The classroom light is a little bit darker during raining days. He feels he can't see the notes clearly from the blackboard when sitting at the back of the classroom.

Need:

Hope classroom lights can be adjusted brighter in raining days.



Name: Mei Zhang

Gender: Female

Age: 65

Occupation: Retired

About:

After retired, Mei Zhang's health is not good and often needs to go to hospital for treatments. She always feels hard to sleep, disturbed by hospital lights.

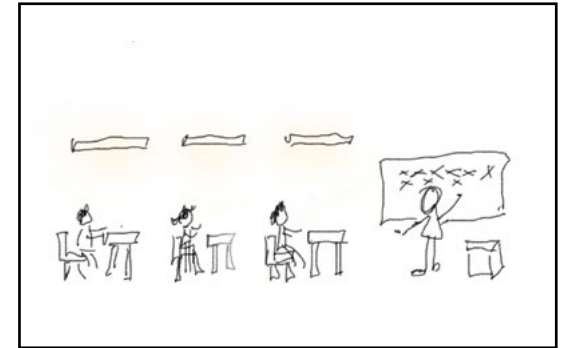
Need:

Hospital lights can be adjusted for better environments to get good treatment.

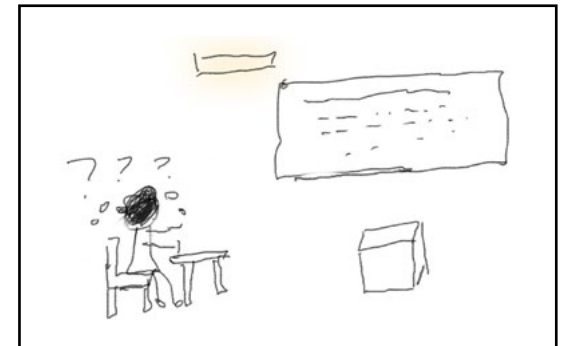
Story



Yi Lu studies at middle school to prepare for the test of high school.

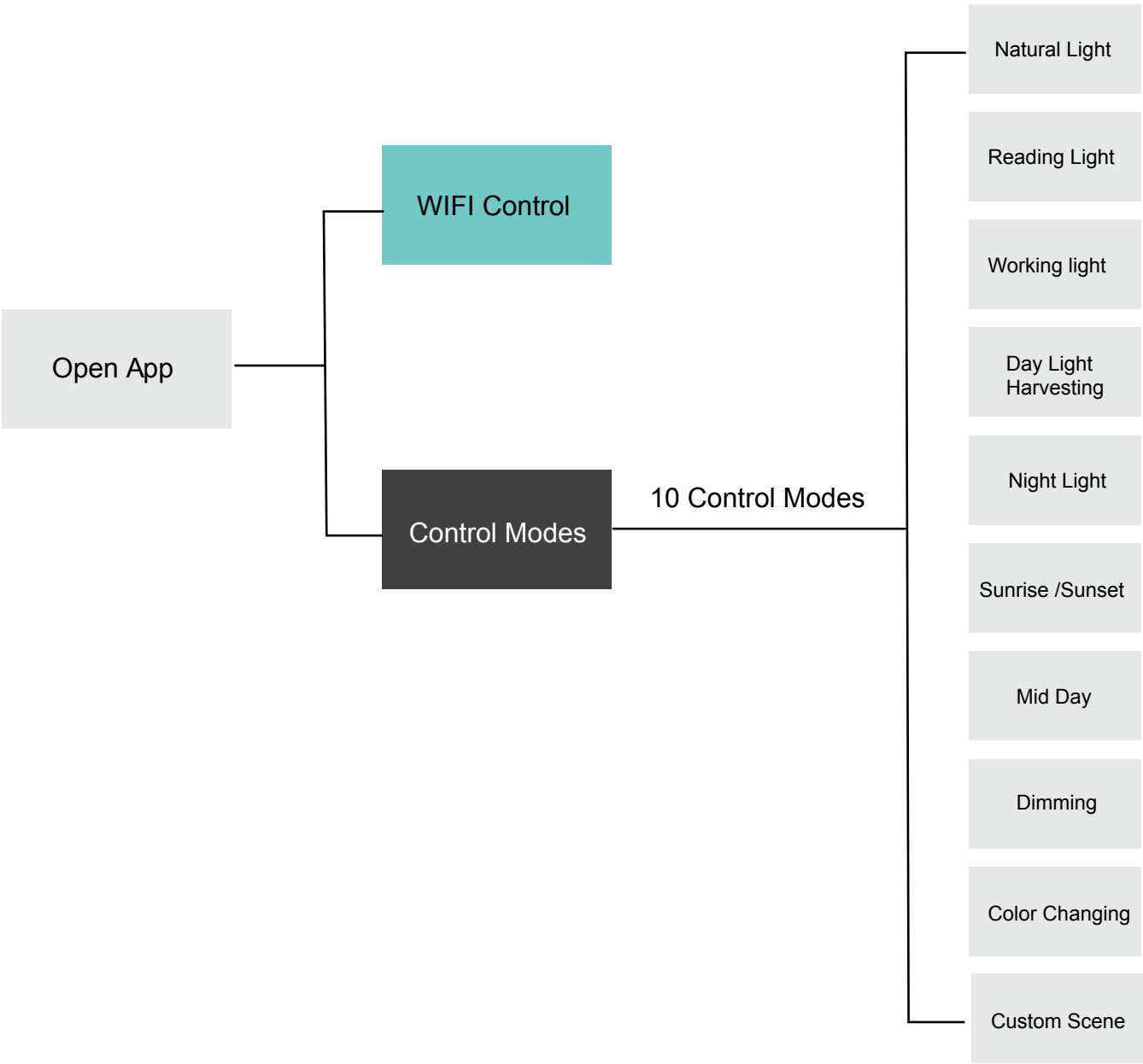


The classroom light is a little bit darker during raining days.

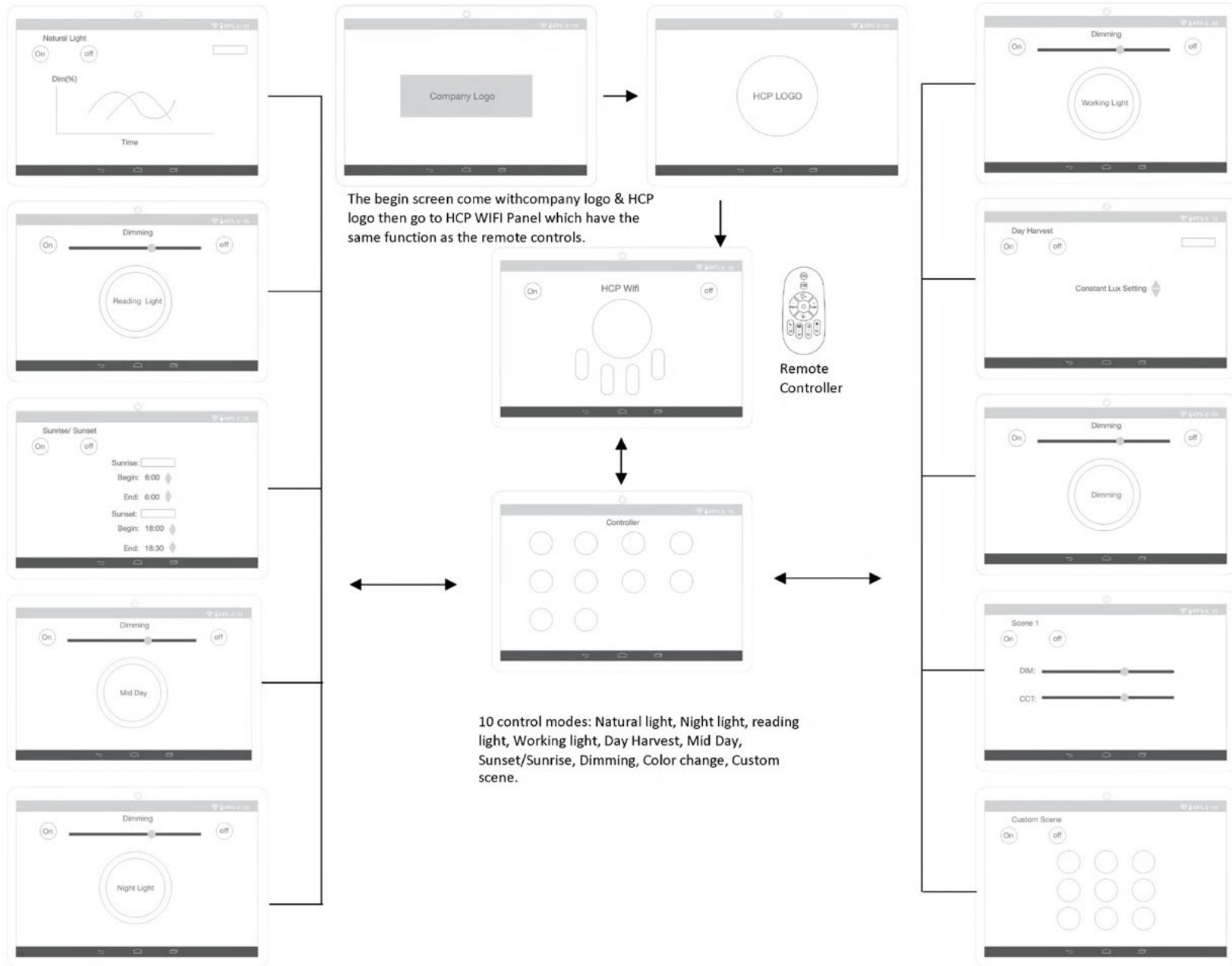


He feels he can't see the notes clearly from the blackboard when sitting at the back of the classroom.

Framework

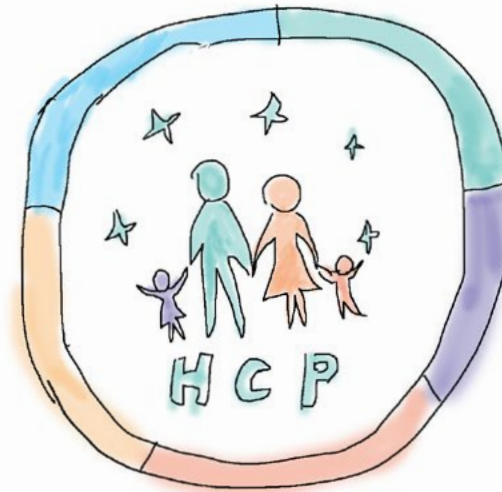


Wire Frame



Sketch

HCP interface Icons



Hcp Logo
(Login APP to display Logo)

HCP ICONS (10 FUNCTION ITEMS)



Natural Light



Reading Light



Working Light



Day Light Harvesting



Night Light



Sunrise / Sunset



Midday



Dimming

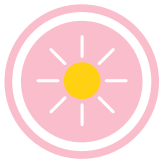


Color Changing



Custom Scene

HCP Interface Icons Design



**Natural
Light**



**Reading
Light**



**Working
Light**



**Day Light
Harvesting**



**Night
Light**



**Sunrise
/Sunset**



Mid Day



Dimming



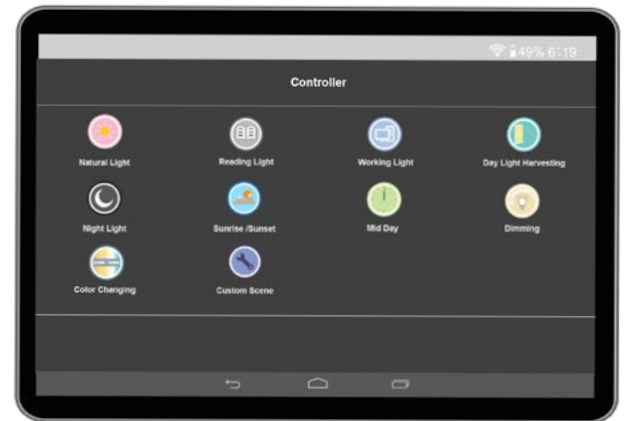
**Color
Changing**



**Custom
Scene**

APP UI design







Controller

Natural Light

Reading Light

Working Light

Day Light Harvesting

Night Light

Sunrise /Sunset

Mid Day

Dimming

Color Changing

Custom Scene

APP UI design

