

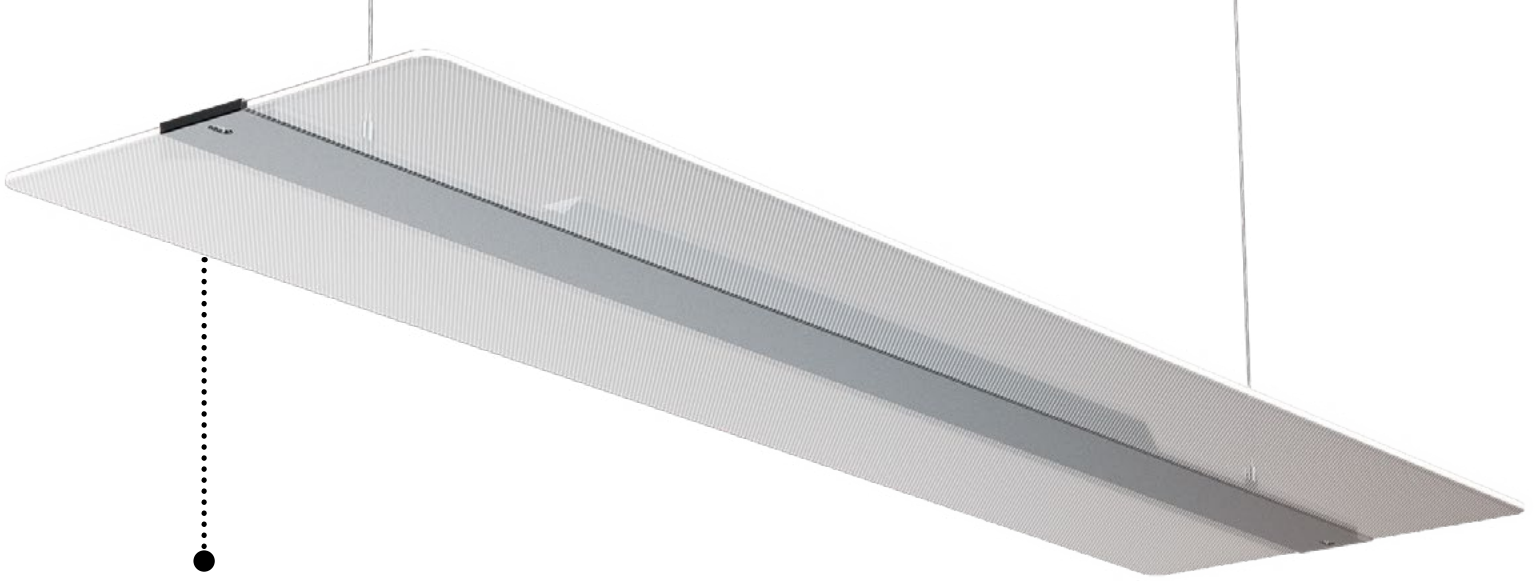


Soar

- Mitsubishi PMMA LGP
- CCT Selectable
- 60% direct and 40% indirect
- Fixture to fixture connection up to 24ft



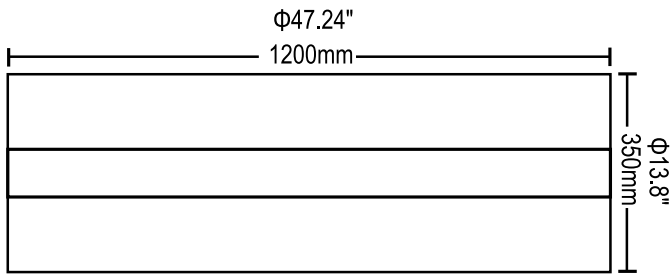
The Soar Pendant Light is designed with two advanced Mutshubishi light guide plates to achieve uniform and anti-glare lighting effect. Elegant appearance looks like flashing wings are soaring in the sky. The middle structure is made of aerometal, super sturdy and corrosion-resistant. It is perfect for applications that include conference rooms, open offices, retail settings, or anywhere you want to make a statement.



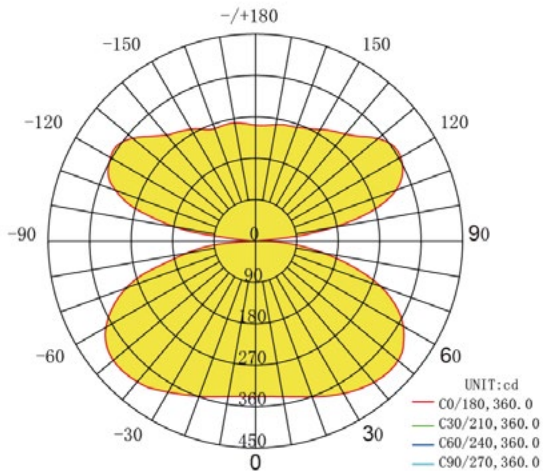
- Mitsubishi PMMA LGP

DIMENSIONS

Net Weight: 11.9 lbs / 5.4 kg



PHOTOMETRY



AVERAGE BEAM ANGLE(50%):360.0 DEG

PERFORMANCE

| | |
|------------------------|-----------|
| Input Watts (Nominal): | 60W |
| Input Voltage: | 120V-277V |
| Lumen Output | 7000 |
| Efficacy@4000K | 117lm/w |
| CRI | 80 |

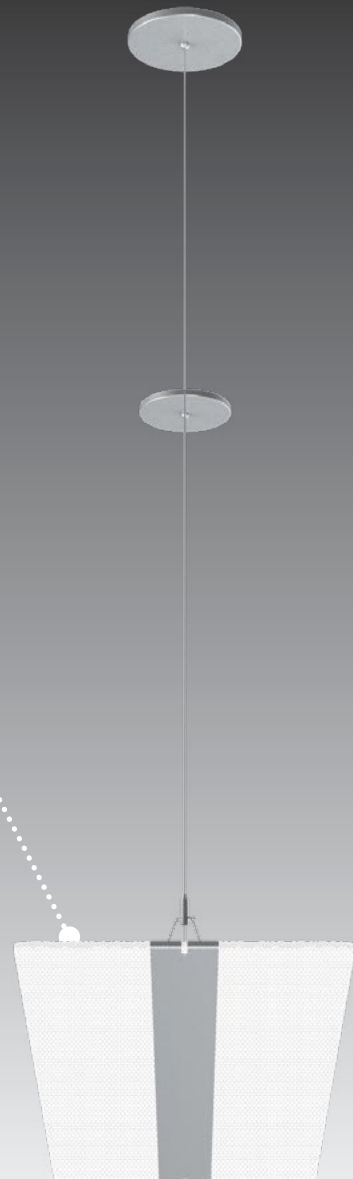
- Mitsubishi light guide plates
- Sturdy and corrosion-resistant aerometal structure
- Direct and indirect distribution
- Transparent flashing wings appearance
- 0-10V dimming



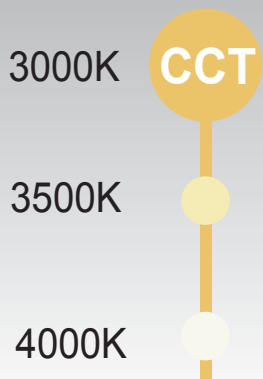




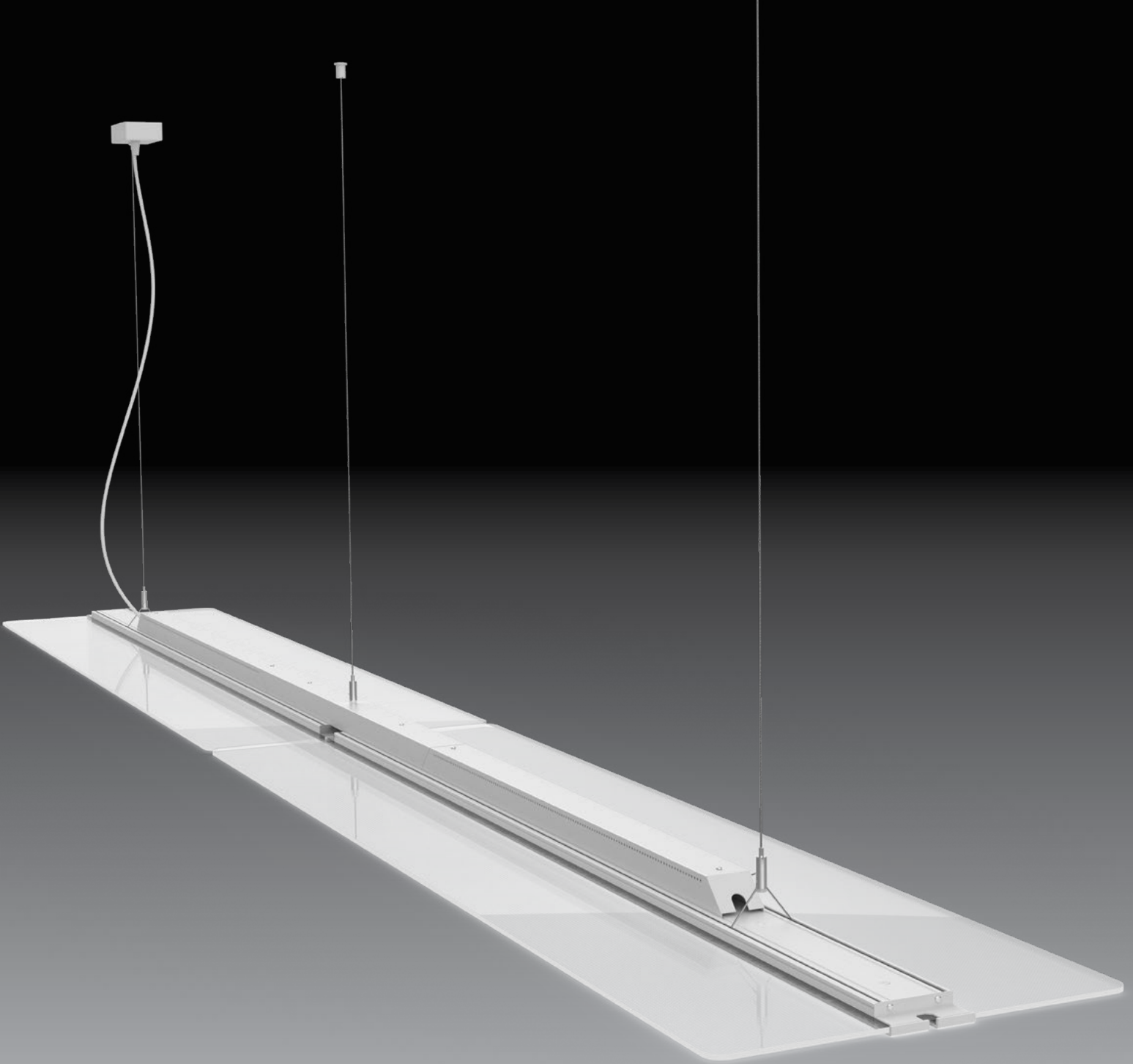
- 60% Direct 40% Indirect lighting distribution, High efficacy up to 120lm/W Flicker free.



- Transparent flashing wings appearance







- Fixture to fixture connection up to 24ft